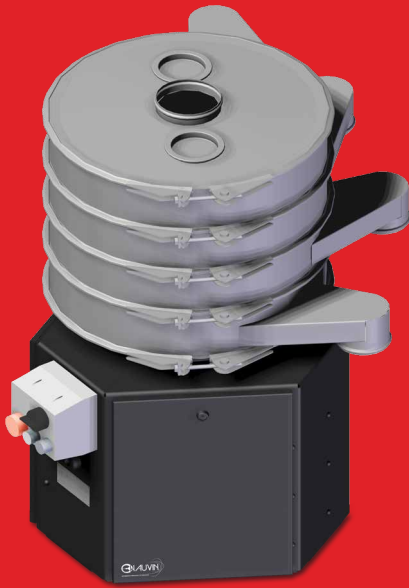
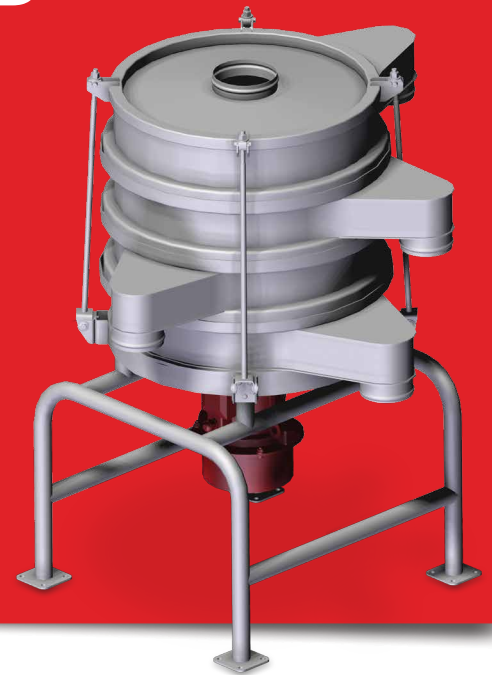


ROUND SIEVES

RS[®] & RSMB



“The circular sieve RS[®] is designed for any kind of liquid/solid sorting and for grain size distribution of dry materials (5 cuts maximum).”



1 | CUSTOMIZED DESIGN

RS/RSMB RANGE : 6 diameters are available :

- RS 45 = 0.15m²
- RS 60 = 0.31m²
- RS 90 = 0.63m²
- RS 120 = 1m²
- RS 150 = 1.65m²
- RS 180 = 2.5m²

- RS : electric motor coupled to a counterweighted shaft.
- RSMB : counterweights motor.

CIRCULAR VIBRATIONS IN THE HORIZONTAL PLANE :



2 | APPLICATIONS

- Almonds
- Crystal sugar
- Liquid chocolate
- Explosive powder
- Ceramic
- Glass
- Pigments

3 | USES

- GRAIN SIZE DISTRIBUTION
- SAFETY SIEVING
- SAFETY FILTERING
- DUSTING

6 SIEVING DECKS

- Collar with no outlet
- Collar with lateral outlet
- Collar with recentring cone



5 WIDE RANGE OF MATERIALS

- 304L stainless steel • 316L stainless steel
- 304 stainless steel • 904L stainless steel
- Steel • Aluminium

4 SUSPENSION

- Silentblocs (rubber)



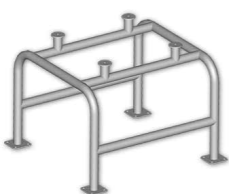
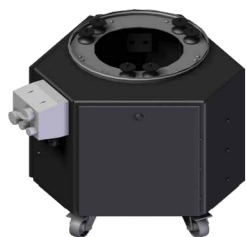
3 LOCKING SYSTEMS

- Hooping (304 / 304L / 316L)
- Tightening clamps (galvanized / stainless steel)
- Tie rods



2 BASES

- Mobile base on caster • High hygiene
- Fixed base on antivibration mounts high hygiene



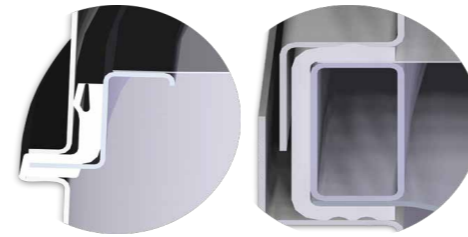
1 CERTIFICATES

- ATEX
- FDA (glue / seals)



7 TYPES OF COLLARS

- With retention zone
- Without retention zone

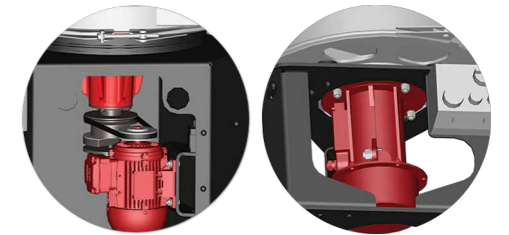


4 HIGHLIGHTS

- HYGIENE (NO RETENTION ZONE)
- ECONOMIC RANGE
- MODULARITY
- STURDINESS
- EFFICIENCY
- SECURITY

8 DRIVE LINE

- Pulley / belt
- Direct coupling



9 FINISHING OF CHASSIS

- Painted steel
- EPOXY powder coating steel
- Pickled and passivated 304L / 316L stainless steel
- Polished 304L / 316L stainless steel

10 FINISHING (INTERIOR / EXTERIOR)

- Pickled
- Polished
- Microblasted
- Passivated
- Electropolished
- Mirror-polished
- Brushed
- Anti wear lining

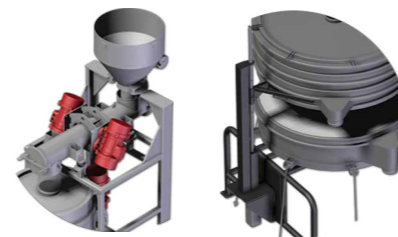
11 DECCLOGGING SYSTEM

- Bil-vib (balls)
- Ultrasound
- Bil-disc (discs)
- Brushes

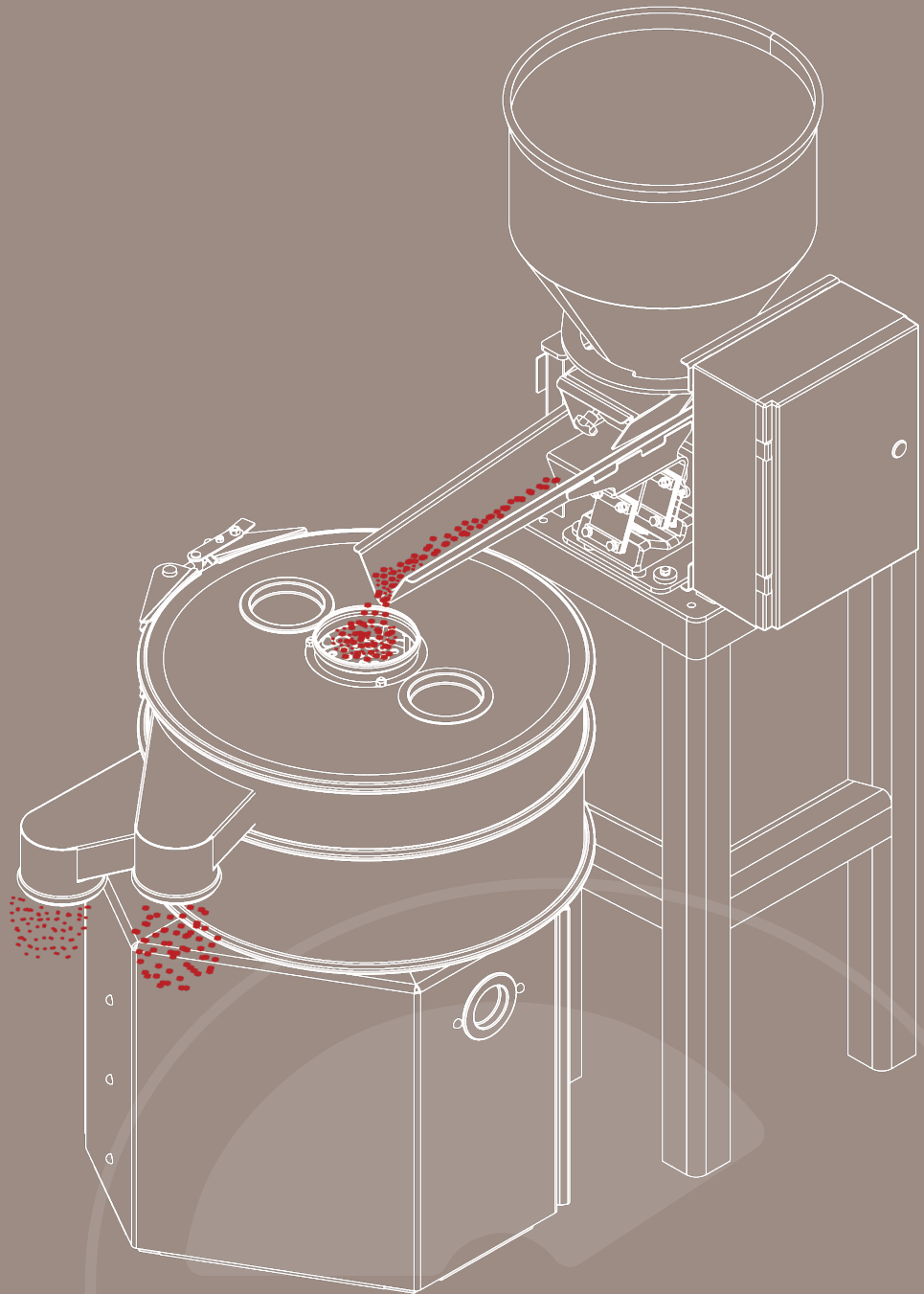


12 OPTIONS

- Vibrating feeder
- Pneumatic cylinder



5 | SIEVING UNIT WITH VIBRATING FEEDER



www.chauvin.fr

info@chauvin.fr

Phone : +33 (0)4 76 09 30 63

Fax : +33 (0)4 76 22 30 54

Head Office

20 rue des Grands Champs

ZI La Rollandière

38360 SASSENAGE - FRANCE

PO Box

BP 70015

38044 GRENOBLE CEDEX 9 - FRANCE

We remain at your disposal for any further information.
CHAUVIN is a subsidiary of SINEX INDUSTRIE.